

# Acczent™

HETEROGENEOUS SHEET

beautifully **resilient**

 **Tarkett**





## ACCZENT

Beyond their reliable strength and resilience, Tarkett's heterogeneous sheet products deliver warmth and elevated design to a variety of commercial spaces. From timeless wood grains to more contemporary stone and woven visuals, the Accent collection helps you easily coordinate patterns and colors that greet visitors with comfort and hospitality.



Accent Wood 29008 Long Modern Oak Greige  
Accent Wood 29403 Scandinavian Oak Medium Beige



There's no need to choose between durability and design—Accent and Accent Flourish deliver the best of both. Created with superior strength for today's health and wellness spaces, these design solutions resist the weight of heavy traffic and rolling loads and are easy to clean, for healing environments that are beautiful, safe and restorative.

- **CERTIFIED asthma & allergy friendly**<sup>®</sup>
- Protected by a UV-cured polyurethane wear layer



1. 28502 / 2. 83207 / 3. 29010 / 4. 83301 / 5. 30000



# ACCZENT Wood



Acczent Wood 27818 Washed Oak Natural

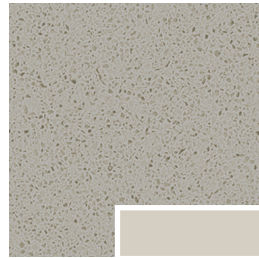
<p><b>28141 MODERN MAPLE</b> MAPLE WB 79 Bone White W *</p>	<p><b>29010 LONG MODERN OAK</b> NATURAL WG 130 Sisal *</p>	<p><b>30000 CABREUVA RED WB</b> TA7 Rusty Nail *</p>	<p><b>81029 CHERRY LIGHT</b> CHERRY WB TA7 Rusty Nail *</p>	<p><b>30003 CABREUVA</b> BROWN WB TA7 Rusty Nail *</p>
<p><b>27002 OAK LONGSTRIPE</b> NATURAL WB 461 Wicker WB *</p>	<p><b>27818 WASHED OAK</b> NATURAL WB TA3 Castaway CB *</p>	<p><b>29008 LONG MODERN OAK</b> GREIGE CB 31 Zephyr CB *</p>	<p><b>29009 LONG MODERN OAK</b> NATURAL BROWN TA2 Saddlebrook WB *</p>	<p><b>81102 FRENCH OAK</b> NATURAL WB TA7 Rusty Nail *</p>
<p><b>81100 FRENCH OAK WHITE W</b> TA3 Castaway CB *</p>	<p><b>29403 SCANDINAVIAN OAK</b> MEDIUM BEIGE CB TG5 Macadamia WG *</p>	<p><b>29005 LONG MODERN OAK</b> WHITE W TA3 Castaway CB *</p>	<p><b>27027 BRUSHED OAK LIGHT CB</b> 80 Fawn CB *</p>	<p><b>04510 SERENE OAK</b> RED BROWN WB TA2 Saddlebrook WB *</p>
<p><b>30007 WALNUT NATURAL WB</b> TA2 Saddlebrook WB *</p>	<p><b>04511 SERENE OAK</b> WARM BROWN WB 107 Neutrality *</p>	<p><b>30008 WALNUT DARK</b> 47 Brown *</p>	<p><b>81000 FRENCH OAK</b> DARK GREY WG 29 Moon Rock WG *</p>	<p><b>04509 SERENE OAK</b> BROWN GREY CB TA8 Welsh Castle CB *</p>
<p><b>27026 BRUSHED OAK</b> MEDIUM WG 29 Moon Rock WG *</p>	<p><b>04512 SERENE OAK</b> DARK BROWN 47 Brown *</p>	<p><b>29400 SCANDINAVIAN OAK</b> DARK GREY CG TB3 Dover CG *</p>	<p><b>04508 SERENE OAK</b> MEDIUM GREY CG TA4 Gateway WG *</p>	<p><b>29006 LONG MODERN OAK</b> BLACK B 44 Dark Brown B *</p>

\*Suggested colors for finishing borders (wall base). See Specification page for further Coordination Details.

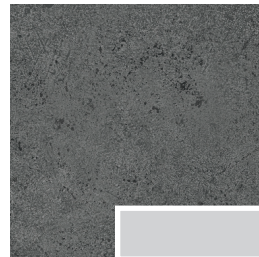




**28502 CONCRETE CHALK WG**  
27 Mist WG \*



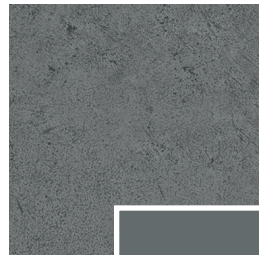
**28110 GRANITO WARM GREY CG**  
24 Grey Haze WG \*



**28501 CONCRETE DARK GREY CG**  
TA4 Gateway WG \*



**28500 CONCRETE COOL GREY CG**  
TA5 Colonial Grey CG \*



**28507 CONCRETE STEEL BLUE CG**  
VL4 Cool Metal CG \*



**Accent Flourish 83205 Serenade**  
**Accent Stone 28500 Concrete Cool Grey**



ACCZENT Flourish™



Accent Flourish 83204 Essence



83207 THRIVE CONNECTION WG  
27 Mist WG \*



83301 PROSPER SOLSTICE WB  
TA1 Tannery WB \*



83204 THRIVE ESSENCE CB  
80 Fawn CB \*



83209 THRIVE ENRICH CB  
280 Shoreline \*



83304 PROSPER ESSENCE CB  
80 Fawn CB \*



83309 PROSPER ENRICH CB  
280 Shoreline \*



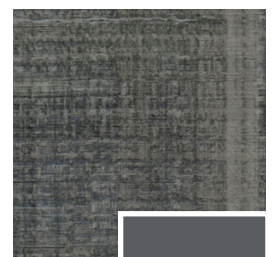
83205 THRIVE SERENADE WG  
32 Pebble WG \*



83208 THRIVE REFLECTION CG  
TA5 Colonial Grey CG \*



83206 THRIVE STABILITY CG  
TA6 Bedrock CG \*



83306 PROSPER STABILITY CG  
TA6 Bedrock CG \*

\*Suggested colors for finishing borders (wall base). See Specification page for further Coordination Details.



# ACCZENT Coordination

## Light

### Warm Beige



WOOD 28141



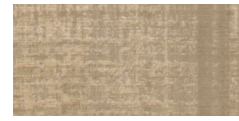
WOOD 29010



WOOD 30000



WOOD 81029



FLOURISH 83301

### Warm Beige



WOOD 27002



WOOD 27818



FLOURISH 83301



STONE 28502

### Light Brown



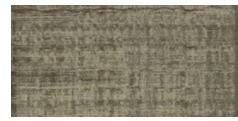
WOOD 29008



WOOD 29009



FLOURISH 83209



FLOURISH 83309



FLOURISH 83301

### Golden Brown



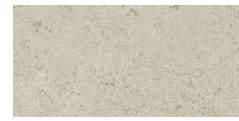
WOOD 81102



WOOD 30003



FLOURISH 83301



STONE 28502

### Light



WOOD 81100



WOOD 29403



WOOD 29005



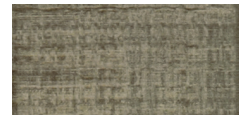
WOOD 27027



FLOURISH 83207



FLOURISH 83209



FLOURISH 83309



FLOURISH 83204



FLOURISH 83304



STONE 28502

### Brown



WOOD 04510

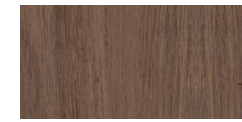


WOOD 30007



FLOURISH 83301

### Dark Brown



WOOD 04511



WOOD 30008



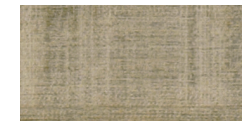
FLOURISH 83304



FLOURISH 83204

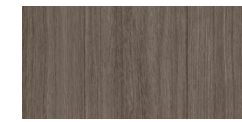


FLOURISH 83309



FLOURISH 83209

### Grey Brown



WOOD 04509



WOOD 81000



WOOD 27026



WOOD 04512



FLOURISH 83204



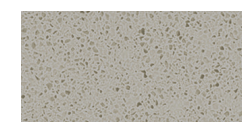
FLOURISH 83304



FLOURISH 83209



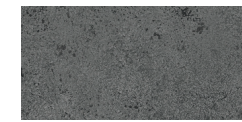
FLOURISH 83309



STONE 28110



STONE 28502



STONE 28501

### Cool Grey



WOOD 29400



WOOD 04508



WOOD 29006



FLOURISH 83205



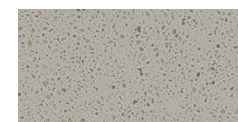
FLOURISH 83208



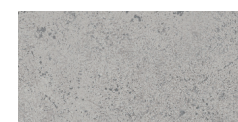
FLOURISH 83206



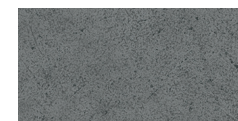
FLOURISH 83306



STONE 28110



STONE 28500



STONE 28507



# ACCZENT Weld Rod Chart

Part Number	Collection	Color	Solid Weld Rod
25127027	Brushed Oak	Light	1287732
25127026	Brushed Oak	Medium	1287433
25030003	Cabrueva	Brown	1287032
25030000	Cabrueva	Red	1287050
25081029	Cherry	Light Cherry	1287050
25128502	Concrete	Chalk	1287572
25128501	Concrete	Dark Grey	1287585
25128500	Concrete	Cool Grey	1287254
25128507	Concrete	Steel Blue	1287836
25081100	French Oak	White	1287178
25081000	French Oak	Dark Grey	1287537
25081102	French Oak	Natural	1287011
25128110	Granito	Warm Grey	1287530
25129008	Long Modern Oak	Greige	1287675
25129005	Long Modern Oak	White	1287707
25029009	Long Modern Oak	Natural	1287664
25029006	Long Modern Oak	Black	1287576
25129010	Long modern Oak	Natural	1287777
25128141	Modern Maple	Maple	1294852
25127002	Oak Longstripe	Natural	1294852
25083306	Prosper	Stability	1287548
25083309	Prosper	Enrich	1287714
25083304	Prosper	Essence	1287497
25083301	Prosper	Solstice	1287501
25129403	Scandinavian Oak	Medium Beige	1287848
25129400	Scandinavian Oak	Dark Grey	1287828
25204511	Serene Oak	Warm Brown	1287780
25204508	Serene Oak	Medium Grey	1294727
25204512	Serene Oak	Dark Brown	1287680
25204509	Serene Oak	Brown Grey	1287546
25204510	Serene Oak	Red Brown	1287503
25083209	Thrive	Enrich	1287713
25083207	Thrive	Connection	1287290
25083208	Thrive	Reflection	1287374
25083206	Thrive	Stability	1287183
25083205	Thrive	Serenade	1287457
25083204	Thrive	Essence	1292771
25030008	Walnut	Dark	1287663
25030007	Walnut	Natural	1287287
25127818	Washed Oak	Natural	1287690



Accent Flourish 83301 Solstice  
Accent Wood 29010 Long Modern Oak Natural



# Tarkett Solution SPECTrum™

At Tarkett, we believe in placing people in the center of every space. So we've developed a portfolio of products designed to work together both functionally and aesthetically, helping you create more supportive spaces that maximize return on investment. Our full palette of colors, patterns, and textures is coordinated to work together visually across product categories—creating the perfect balance for people, planet and performance.

The Brilliance<sup>SM</sup> Digital Color System puts the entire TARKETT SOLUTION SPECTrum portfolio at your fingertips—no matter where you happen to be working. Within one digital tool, you can save favorite surfaces to project boards, visualize them in a space, and order samples. By getting the right color match every time, the tool reduces sample waste and shipping, helping us all design more responsibly and reduce our carbon footprint.

Speak to your Tarkett sales representative to get started, or visit [brilliance.tarkett.com](https://brilliance.tarkett.com).



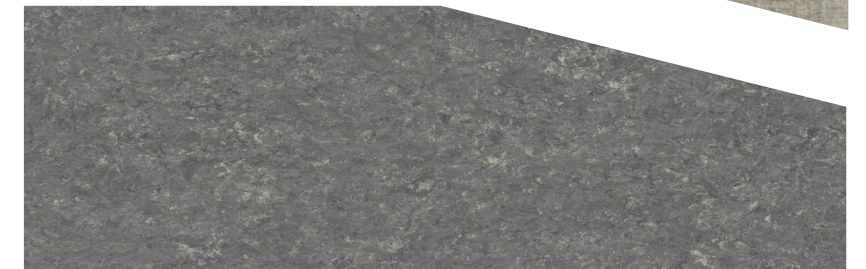
Capture 11359  
Cloud Base 52703



iQ Optima  
862 Raw Ivory



Accent Flourish  
Thrive Reflection 83208



LinoFloor  
Veneto Pebble 604



LinoFloor  
Veneto Storm 702



Resonate 11360  
Cloud Base 52703



Accent Stone  
Cool Grey 28500



Diplomat Millwork Wall Base  
29 Moon Rock



Silhouette Millwork Wall Base  
08 Icicle



Inflection Millwork Wall Base  
TA8 Welsh Castle



Accent Wood  
French Oak Dark Grey 81000



Substance 11449  
Terrene 76205



iQ Optima  
207 Prairie Dancing

Color may vary from actual swatch. To order a sample and to learn more, please visit [tarkett.com](https://tarkett.com).





For years, Tarkett has raised the sustainability standards of our industry. We took the first steps and are determined to stay a step ahead.

And while inspirational words are great, we know impact is in the numbers – numbers subjected to intense third-party scrutiny. So, at Tarkett we don't just say it, **we prove it.**

These three values help us stay the course when it comes to sustainability.

 <h3>Setting New Transparency Standards</h3> <p>What you begin with affects everything that comes after it. That's why we subject our products to relentless scientific scrutiny and third-party testing and offer radical transparency about our materials and operations.</p>	 <h3>Empowering the Next Step in the Value Chain</h3> <p>We make our business partners and customers more inherently sustainable with products and practices that consider every step in the value chain.</p>	 <h3>Creating Healthier Futures</h3> <p>We base all our sustainability initiatives on our commitment to create healthier environments indoors and out, today and for generations to come.</p>
--	--	--

## Sustainability Highlights

Feel confident in the numbers



A holistic approach you can count on...

# 97%

of our raw materials are third-party assessed for their impact on human and environmental health based on Cradle to Cradle criteria.

# 70%

of raw materials are abundant, rapidly renewable or recycled.

# 14

zero-waste to landfill manufacturing plants.



...And certifications you can trust.

# 2011

started working with EPEA to integrate Cradle to Cradle principles into every facet of our business.

# 2013

first commercial flooring CERTIFIED **asthma and allergy friendly**®.

# 2022

Powerbond RS is the first soft surface product in the industry to be CERTIFIED **asthma and allergy friendly**®.



We're leaders in radical transparency.

# 100 ppm

raw materials content revealed down to 100 parts per million.

When most manufacturers reveal raw materials content down to just 1,000 ppm, there's simply no contest.

We've been providing Material Health Statements since 2013 to give you peace of mind about the content of our products.



Setting tomorrow's standards...

# 99%

of flooring solutions have low VOC emission levels – 10x lower than the most stringent world standards.

# 100%

orthophthalate-free vinyl production. First company to eliminate orthophthalates from all products.



...For globally recognized excellence.

# 2010

first flooring manufacturer to join the UN Global Compact.

# 2021

awarded the Gold medal by EcoVadis; now ranked among the top 2% of companies in our industry rated by EcoVadis.

# 2022

scored A-, the CDP management level, regarding the climate change performance assessment.

At Tarkett, social and environmental responsibility aren't add-ons. They're woven, stamped and sealed into everything we do. **But more importantly, we don't just say this, we prove it.**



# ACCZENT Specifications


Technical Data	Standards	
Type of Floor Covering		Heterogeneous Vinyl Sheet
Classification	ASTM F1303	Type I, Grade 1, Class B
Wear Layer Thickness	ASTM F410	.032" (0.8 mm)
Polyurethane Reinforced	ASTM F410	Yes
Total Thickness	ASTM F386	0.080" Gauge (2.0 mm)
Static Load Limit	ASTM F970	175 psi, $\leq 0.005"$
Resistance to Heat	ASTM F1514	$\Delta E \leq 8.0$
Resistance to Light	ASTM F1515	$\Delta E \leq 8.0$
Slip Resistance	ASTM D2047	$\geq 0.5$ SCOF
Flame Resistance	ASTM E648	Class 1 ( $\geq 0.45$ W/cm <sup>2</sup> )
Chemical Resistance	ASTM F925	Passes
Colors		Acczent: Stones: [Granito 1 and Concrete 4], Wood 25 Acczent Flourish: 6 Thrive, 4 Prosper
Roll	Length Width Weight/ yd <sup>2</sup> / m <sup>2</sup>	Approx 76 linear feet (23 linear meters) 6' 6" nominal (2m) 5.7 lbs/yd <sup>2</sup> (3.1 kg/m <sup>2</sup> )

Please visit [tarkett.com](http://tarkett.com) for the most updated specifications, and installation, cleaning and maintenance instructions. The weld rods listed are intended to correspond with the denoted flooring colors. Other weld rods can be used for a variety of visual effects.

On the cover:

**Acczent Stone** 28110 Granito Warm Grey

**Acczent Flourish** 83208 Reflection



**000** color name  
**000** coordinating color\*

We've identified Color Foundations™ neutrals in the following way:

**WB** (Warm Beige), **CB** (Cool Beige),  
**WG** (Warm Grey), **CG** (Cool Grey),  
**B** (Black), **W** (White).

\*Suggested colors for finishing borders (wall base). Coordinated Johnsonite Accessories are a printed approximation. Please refer to the Color Guide for accurate color representation.



## Tarkett North America

30000 Aurora Road  
Solon, Ohio 44139  
800.899.8916

[tarkett.com](http://tarkett.com)

For more accurate color and pattern representation, we suggest you visit an authorized Tarkett dealer to view an actual product sample. All third-party trademarks are the property of their respective owners.